

# USER MANUAL

MULTIPROTOCOL “KEY” GATEWAYS SERIES

IEC 61850 - MODBUS RTU&TCP GATEWAYS



**SENECA S.r.l.**

**Via Austria 26 – 35127 – Z.I. - PADOVA (PD) - ITALY**  
**Tel. +39.049.8705355 – 8705355 Fax +39 049.8706287**

[www.seneca.it](http://www.seneca.it)

**ORIGINAL INSTRUCTIONS**

### CAUTION

SENECA does not guarantee that all specifications and/or aspects of the product and firmware, included in them, will meet the requirements of the actual final application even if the product referred to in this documentation is in compliance with the technological state of the art.

The user assumes full responsibility and/or risk with regard to the configuration of the product to achieve the intended results in relation to the specific installation and/or end application.

SENECA may, with prior agreement, provide consultancy services for the successful completion of the final application, but under no circumstances can it be held responsible for its proper functioning.

The SENECA product is an advanced product, the operation of which is specified in the technical documentation supplied with the product itself and/or can be downloaded, if desired prior to purchase, from the [www.seneca.it](http://www.seneca.it) website.

SENECA has a policy of continuous development and accordingly reserves the right to make and/or introduce - without prior notice - changes and/or improvements to any product described in this documentation.

The product described in this documentation may solely and exclusively be used by personnel qualified for the specific activity and in accordance with the relevant technical documentation, with particular attention being paid to the safety instructions.

Qualified personnel means personnel who, on the basis of their training, competence and experience, are able to identify risks and avoid potential hazards that could occur during the use of this product.

SENECA products may only be used for the applications and in the manner described in the technical documentation relating to the products themselves.

To ensure proper operation and prevent the occurrence of malfunctions, the transport, storage, installation, assembly, maintenance of SENECA products must comply with the safety instructions and environmental conditions specified in this documentation.

SENECA's liability in relation to its products is governed by the general conditions of sale, which can be downloaded from [www.seneca.it](http://www.seneca.it).

Neither SENECA nor its employees, within the limits of applicable law, will in any case be liable for any lost profits and/or sales, loss of data and/or information, higher costs incurred for goods and/or replacement services, damage to property and/or persons, interruption of activities and/or provision of services, any direct, indirect, incidental, pecuniary and non-pecuniary, consequential damages in any way caused and/or caused, due to negligence, carelessness, incompetence and/or other liabilities arising from the installation, use and/or inability to use the product.

### CONTACT US

Technical Support	<a href="mailto:supporto@seneca.it">supporto@seneca.it</a>
Product information	<a href="mailto:commerciale@seneca.it">commerciale@seneca.it</a>

## Document revisions

DATE	REVISION	NOTES	AUTHOR
16/09/2024	0	First revision	MM
24/02/2025	1	Added led chapter Added modbus registers info chapter	MM

This document is the property of SENECA srl.  
Copies and reproduction are prohibited unless authorised.

**TABLE OF CONTENTS**

<b>1.</b>	<b>DESCRIPTION .....</b>	<b>6</b>
1.1.	IEC61850 PROTOCOL .....	6
1.2.	FEATURES OF THE “KEY” SERIES COMMUNICATION PORTS.....	6
<b>2.</b>	<b>DEVICE HARDWARE REVISION .....</b>	<b>7</b>
<b>3.</b>	<b>FLEX TECHNOLOGY FOR PROTOCOL CHANGE .....</b>	<b>8</b>
3.1.	CHANGING PROTOCOLS WITH THE SENECA DISCOVERY DEVICE SOFTWARE .....	9
<b>4.</b>	<b>LED MEANING .....</b>	<b>10</b>
4.1.	Z-KEY-I (IEC61850) MODEL LED.....	10
4.2.	R-KEY-LT-I (IEC61850) MODEL LED.....	11
4.3.	Z-KEY-2ETH-I (IEC61850) MODEL LED .....	12
<b>5.</b>	<b>ETHERNET PORT.....</b>	<b>13</b>
<b>6.</b>	<b>FIRMWARE UPDATE.....</b>	<b>13</b>
<b>7.</b>	<b>OPERATING MODE .....</b>	<b>14</b>
7.1.	GATEWAY IEC 61850 SERVER / MODBUS MASTER.....	14
<b>8.</b>	<b>IEC61850 IMPLEMENTATION ON THE “KEY” SERIES GATEWAYS.....</b>	<b>15</b>
8.1.	Basic SCL structure.....	15
8.2.	Modbus variables.....	15
8.3.	DataSet.....	15
8.4.	Report Control Block (unbuffered/buffered) in the SCL structure .....	16
<b>9.</b>	<b>GATEWAY CONFIGURATION .....</b>	<b>17</b>
9.1.	GATEWAY CONFIGURATION WITH THE WEBSERVER FOR THE “COPADATA IEC61850 CLIENT™” CLIENT.....	17
<b>10.</b>	<b>GATEWAY WEBSERVERS .....</b>	<b>23</b>
10.1.	WEBSERVER DEI GATEWAY “-I” .....	23
10.1.1.	WEBSERVER MODE AND IEC61850 MODE .....	23
10.1.2.	MANUAL PROCEDURE FOR SWITCHING FROM IEC61850 MODE TO WEBSERVER MODE AND VICE VERSA	23
10.1.3.	STEP BY STEP GUIDE FOR THE FIRST ACCESS TO THE WEBSERVER .....	24
10.1.4.	WEBSERVER DEVICE CONFIGURATION .....	25
10.1.4.1.	WEBSERVER SECTIONS .....	26
10.1.4.2.	“STATUS” SECTION .....	27
10.1.4.3.	“SETUP” SECTION .....	28
10.1.4.3.1.	SAVING A CONFIGURATION ON A FILE .....	32
10.1.4.3.2.	IMPORTING A CONFIGURATION FROM A FILE .....	33
10.1.4.4.	“SETUP COMMANDS/TAGS” SECTION .....	33
10.1.4.5.	“I/O MAPPING” SECTION.....	34

---

10.1.4.1.	"SETUP IEC VARIABLES" SECTION .....	34
10.1.4.1.	"SETUP IEC DATASET" SECTION.....	35
10.1.4.2.	"SETUP IEC REPORT CONTROL BLOCK" SECTION .....	35
10.1.4.1.	"FIRMWARE UPDATE" SECTION.....	35
10.1.4.1.	"CERTIFICATE SETUP" SECTION .....	35
10.1.4.2.	SERIAL "SERIAL TRAFFIC MONITOR" .....	35
10.1.4.1.	LOCAL TIME SETUP .....	36
<b>11.</b>	<b>SUPPORTED MODBUS COMMUNICATION PROTOCOLS .....</b>	<b>36</b>
11.1.	SUPPORTED MODBUS FUNCTION CODES.....	36
<b>12.</b>	<b>RESETTING THE DEVICE TO ITS FACTORY CONFIGURATION .....</b>	<b>37</b>
<b>13.</b>	<b>INFORMATION ABOUT MODBUS REGISTERS .....</b>	<b>38</b>
13.1.	NUMBERING OF "0-BASED" OR "1-BASED" MODBUS ADDRESSES .....	38
13.2.	NUMBERING OF MODBUS ADDRESSES WITH "0-BASED" CONVENTION .....	39
13.3.	NUMBERING OF MODBUS ADDRESSES WITH "1 BASED" CONVENTION (STANDARD) .....	39
13.4.	BIT CONVENTION WITHIN A MODBUS HOLDING REGISTER .....	40
13.5.	MSB and LSB BYTE CONVENTION WITHIN A MODBUS HOLDING REGISTER.....	40
13.6.	REPRESENTATION OF A 32-BIT VALUE IN TWO CONSECUTIVE MODBUS HOLDING REGISTERS .....	41
13.7.	TYPE OF 32-BIT FLOATING POINT DATA (IEEE 754).....	42

## 1. DESCRIPTION

The Z-KEY-I, R-KEY-LT-I, Z-KEY-2ETH-I products allow to convert data coming from the Modbus serial bus or Modbus TCP-IP Ethernet into the IEC61850 protocol or vice versa.

### 1.1. IEC61850 PROTOCOL

IEC 61850 is a standard for the design of automation systems for electrical substations. It is part of the International Electrotechnical Commission.

The data model defined in IEC 61850 is supported, for example, by the MMS protocol.

PROTOCOL	
<b>Type of protocol</b>	IEC 61850 server MMS (manufacture message specification) protocol supported Report Control Block buffered/unbuffered supported Encrypted connection with certificates supported Goose and SMV protocols not supported TLS 1.2 connection, X.509 certificate management

MEMORY	
<b>Memory size of variables</b>	512 bytes max in reading and 512 bytes max in writing

### 1.2. FEATURES OF THE “KEY” SERIES COMMUNICATION PORTS

<b>PRODUCT</b>	<b>ETHERNET PORTS</b>	<b>SERIAL PORT # 1 RS232/RS485 CONFIGURABLE</b>	<b>RS485 SERIAL PORT # 2</b>	<b>ISOLATED SERIAL PORTS</b>
Z-KEY-I	1	1	1	Yes, both ports
R-KEY-LT-I	1	1	NO	NO
Z-KEY-2ETH-I	2	1	1	Yes, both ports

## 2. DEVICE HARDWARE REVISION

With a view to continuous improvement, Seneca updates and makes the hardware of its devices increasingly more sophisticated. It is possible to know the hardware revision of a product via the label on the side of the device.

An example of an R-KEY-LT product label is the following:



The label also shows the firmware revision present in the device (in this case 2.0.1.0) at the time of sale. To improve performance or extend functionality, Seneca recommends updating the firmware to the latest available version (see the section dedicated to the product on [www.seneca.it](http://www.seneca.it)).

**3. FLEX TECHNOLOGY FOR PROTOCOL CHANGE**



Starting from the hardware revision indicated in the following table, the KEY series devices include Flex technology.

<b>GATEWAY</b>	<b>FLEX TECHNOLOGY SUPPORTED BY HARDWARE REVISION</b>
Z-KEY	"G00"
R-KEY-LT	"E00"
Z-KEY-2ETH	"C00"

Flex allows you to change the combination of industrial communication protocols supported by the gateways at will from a list of available ones, the development is continuously updated, for a complete list refer to the page: <https://www.seneca.it/flex/>

Some examples of supported protocols are:

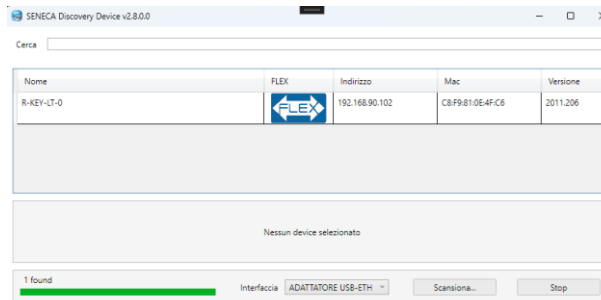


The gateway then becomes “universal” and compatible with Siemens or Rockwell or Schneider systems etc. without the need to purchase different hardware.

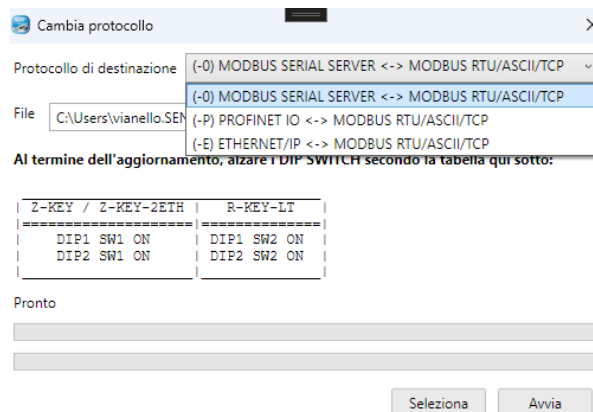


### 3.1. CHANGING PROTOCOLS WITH THE SENECA DISCOVERY DEVICE SOFTWARE

From revision 2.8 the Seneca Discovery Device software identifies the devices that support the “Flex” technology:



For example, in the case in the figure it is possible to press the “Change Protocol” button and select the destination protocol from those in the list:



At the end of the operation, bring (only at the first power-on) the dip switches 1 and 2 to “ON” to force the device to default (see also the chapter “RESETTING THE DEVICE TO ITS FACTORY CONFIGURATION”).

Always refer to the user manual of the communication protocol installed in the device by downloading it from the Seneca website.

## 4. LED MEANING

The devices are equipped with LEDs whose meaning is as follows:

### 4.1. Z-KEY-I (IEC61850) MODEL LED

LED	STATUS
PWR	<p><b>Steady on:</b> device powered and IP address set</p> <p><b>Flashing:</b> IP address not yet set</p> <p><b>Off:</b> device not powered</p>
COM	Not used
TX1	<p><b>Flashing:</b> data transmission on serial port #1</p> <p><b>Off:</b> no transmission on serial port #1</p>
RX1	<p><b>Flashing:</b> data reception on serial port #1</p> <p><b>Steady on:</b> check wiring on serial port #1</p> <p><b>Off:</b> no reception on serial port #1</p>
TX2	<p><b>Flashing:</b> data transmission on serial port #2</p> <p><b>Off:</b> no transmission on serial port #2</p>
RX2	<p><b>Flashing:</b> data reception on serial port #2</p> <p><b>Steady on:</b> check wiring on serial port #2</p> <p><b>Off:</b> no reception on serial port #2</p>
ETH ACT (GREEN)	<p><b>Flashing:</b> presence of data on ethernet port</p> <p><b>Steady on:</b> ethernet port connected but no data present</p> <p><b>Off:</b> check wiring of the ethernet port</p>
ETH LNK (YELLOW)	<p><b>Steady on:</b> ethernet cable connected</p> <p><b>Off:</b> check the wiring of the ethernet port</p>

4.2. R-KEY-LT-I (IEC61850) MODEL LED

LED	STATUS
PWR	<p><b>Steady on:</b> device powered and IP address set</p> <p><b>Flashing:</b> IP address not yet set</p> <p><b>Off:</b> device not powered</p>
COM	Not used
TX	<p><b>Flashing:</b> data transmission on serial port</p> <p><b>Off:</b> no transmission on serial port</p>
RX	<p><b>Flashing:</b> data reception on serial port</p> <p><b>Steady on:</b> check wiring on serial port</p> <p><b>Off:</b> no reception on serial port</p>
ETH (GREEN) ACT	<p><b>Flashing:</b> presence of data on ethernet port</p> <p><b>Steady on:</b> ethernet port connected but no data present</p> <p><b>Off:</b> check wiring of the ethernet port</p>
ETH (YELLOW) LNK	<p><b>Steady on:</b> ethernet cable connected</p> <p><b>Off:</b> check the wiring of the ethernet port</p>

**4.3. Z-KEY-2ETH-I (IEC61850) MODEL LED**

<b>LED</b>	<b>STATUS</b>
PWR	<p><b>Steady on:</b> device powered and IP address set</p> <p><b>Flashing:</b> IP address not yet set</p> <p><b>Off:</b> device not powered</p>
COM	Not used
TX1	<p><b>Flashing:</b> data transmission on serial port #1</p> <p><b>Off:</b> no transmission on serial port #1</p>
RX1	<p><b>Flashing:</b> data reception on serial port #1</p> <p><b>Steady on:</b> check wiring on serial port #1</p> <p><b>Off:</b> no reception on serial port #1</p>
TX2	<p><b>Flashing:</b> data transmission on serial port #2</p> <p><b>Off:</b> no transmission on serial port #2</p>
RX2	<p><b>Flashing:</b> data reception on serial port #2</p> <p><b>Steady on:</b> check wiring on serial port #2</p> <p><b>Off:</b> no reception on serial port #2</p>
ET1	<p><b>Flashing:</b> presence of data on ethernet port #1</p> <p><b>Steady on:</b> ethernet port #1 connected but no data present</p> <p><b>Off:</b> check wiring of ethernet port #1</p>
ET2	<p><b>Flashing:</b> presence of data on ethernet port #2</p> <p><b>Steady on:</b> ethernet port #2 connected but no data present</p> <p><b>Off:</b> check wiring of ethernet port #2</p>

## 5. ETHERNET PORT

The factory configuration of the Ethernet port is:

STATIC IP: 192.168.90.101

SUBNET MASK: 255.255.255.0

GATEWAY: 192.168.90.1

Multiple devices must not be inserted on the same network with the same static IP.

 **ATTENTION!**

***DO NOT CONNECT 2 OR MORE FACTORY-CONFIGURED DEVICES ON THE SAME NETWORK, OR THE  
DEVICE WILL NOT WORK  
(CONFLICT OF IP ADDRESSES 192.168.90.101)***

## 6. FIRMWARE UPDATE

In order to improve, add or optimize the functions of the product, Seneca releases firmware updates on the device section on the [www.seneca.it](http://www.seneca.it) website

The firmware update is performed using Seneca tools or the webserver.

 **ATTENTION!**

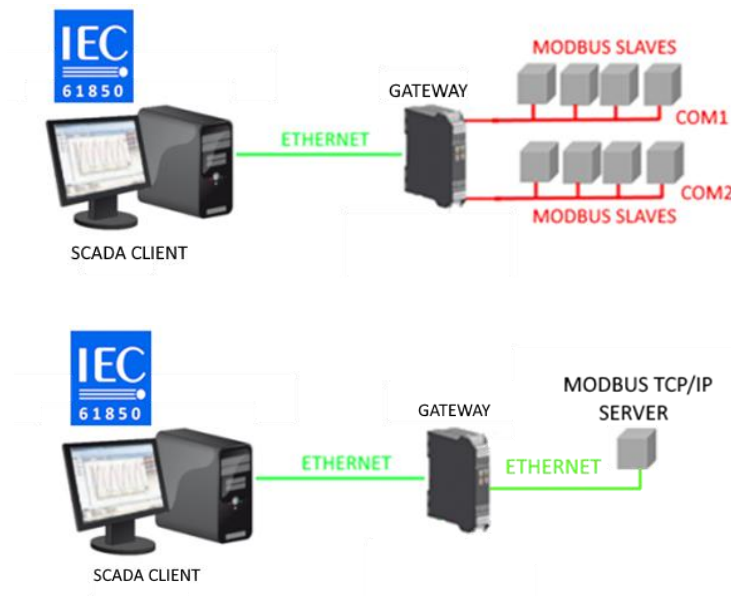
**NOT TO DAMAGE THE DEVICE DO NOT REMOVE THE POWER SUPPLY DURING THE FIRMWARE  
UPDATE OPERATION.**

## 7. OPERATING MODE

The Gateway allows you to operate in the following mode:  
*GATEWAY IEC 61850 SERVER / MODBUS RTU/TCP MASTER*

### 7.1. GATEWAY IEC 61850 SERVER / MODBUS MASTER

This operating mode allows to connect an IEC 61850 SCADA client with Modbus RTU/ASCII Slave and/or remote TCP Server I/O devices



The Gateway, on the field side, works as a Modbus master / Modbus Client device and on the other side as an IEC 61850 server via Ethernet.

The Modbus requests (read or write commands) are configured in the gateway device and an ICD file is automatically generated according to the SCL standard.

Once this file is imported into the SCADA (it is also possible to search for the node) all the configured IO will be accessible without any other configuration.

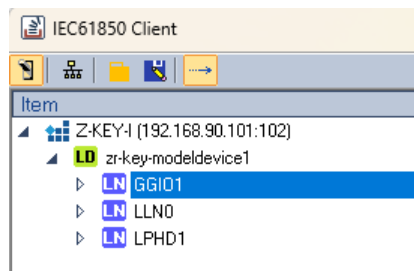
In addition to the serial devices, it is also possible to connect up to 3 remote Modbus TCP-IP servers.

## 8. IEC61850 IMPLEMENTATION ON THE “KEY” SERIES GATEWAYS

Given the complexity of the IEC61850 protocol, the “KEY” series gateways implement an IEC61850 server with some simplified features that we list:

### 8.1. Basic SCL structure

The basic SCL structure is constant and is represented by 3 logical nodes:



GGIO1 represents the logical Node Generic IO 1, here all the variables coming from the Modbus buses will be present.

LLN0 represents the logical node zero. Contains the data relating to the Intelligent Electronic Device (IED family KEY)

LPHD1 represents the physical logic node 1. Contains information relating to the physical device.

### 8.2. Modbus variables

When variables are added (reads/writes from the Modbus protocol) these will always be added to the logic node GGIO1. For example, for the “VAR1” variable we have:

Item	Value	Status	Quality	Format	Access Ri...	Time
Z-KEY-I (192.168.90.101:102)	Connected (stack v10509)					
zr-key-modeldevice1						
LN GGIO1						
DS						
Beh						
VAR1						
svVal [ST]	168093840		GOOD	I4	Read Only	
q [ST]	GOOD		GOOD	UI4	Read Only	
t [ST]	1970.01.01 00:50:42.0		GOOD	R8	Read Only	
LN LLN0						
LN LPHD1						

### 8.3. DataSet

For the Report Data Blocks it is necessary to define one or more sets of variables, this is done through the definition of the datasets.

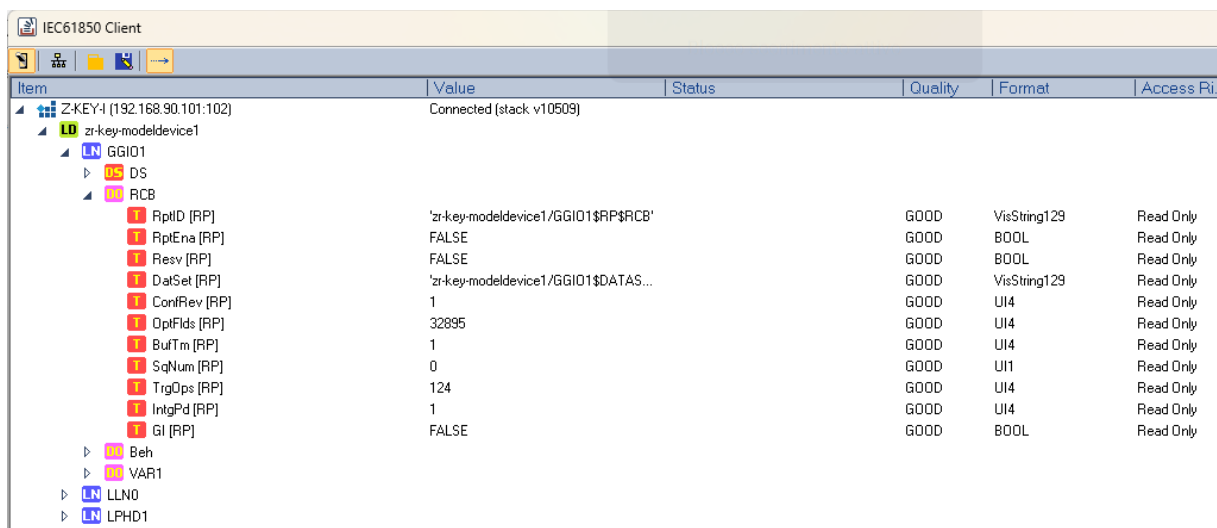
### 8.4. Report Control Block (unbuffered/buffered) in the SCL structure

The IEC 61850 standard defines a reporting mechanism that uses spontaneous data transmission. This aims to minimize the network load. The generation and transmission of the report are controlled by the report control blocks. A report control block is defined by its attributes, such as the assigned dataset, trigger options and optional fields. The dataset is sent directly from the server to the client in case the configured event has occurred. The KEY series gateways support both buffered and unbuffered RCBs.

In unbuffered RCBs the data is transmitted as defined by the chosen trigger options. In case of a connection loss the data is not stored. Transmission resumes once the connection is re-established but information that may have been transmitted during the connection loss will be lost.

In buffered RCBs, however, in the event of a connection interruption, the data is stored in a circular buffer. As soon as the connection is re-established, the buffered information is transmitted in chronological order.

When Report Data Blocks are defined, they will always appear under the logical node GGI01:



Item	Value	Status	Quality	Format	Access Ri
Z-KEY-1 (192.168.90.101:102)	Connected (stack v10509)				
zr-key-modeldevice1					
GGI01					
DS					
RCB					
RptID [RP]	'zr-key-modeldevice1/GGI01\$RP\$RCB'		GOOD	VisString129	Read Only
RptEna [RP]	FALSE		GOOD	BOOL	Read Only
Resv [RP]	FALSE		GOOD	BOOL	Read Only
DatSet [RP]	'zr-key-modeldevice1/GGI01\$DATAS...		GOOD	VisString129	Read Only
ContRev [RP]	1		GOOD	UI4	Read Only
OptFlds [RP]	32895		GOOD	UI4	Read Only
BuTm [RP]	1		GOOD	UI4	Read Only
SqNum [RP]	0		GOOD	UI1	Read Only
TrgOps [RP]	124		GOOD	UI4	Read Only
IntgPd [RP]	1		GOOD	UI4	Read Only
GI [RP]	FALSE		GOOD	BOOL	Read Only
Beh					
VAR1					
LLN0					
LPHD1					



## 9. **GATEWAY CONFIGURATION**

### 9.1. **GATEWAY CONFIGURATION WITH THE WEBSERVER FOR THE “COPADATA IEC61850 CLIENT™” CLIENT**

The COPADATA “IEC61850 Client” software will be used as IEC 61850 client for Windows.  
For more information on the client software, refer to:

<https://www.copadata.com>

The purpose is to configure the gateway so that it can read a register coming from the serial modbus RTU protocol from a 61850 client.

We configure the Gateway via the webserver, first we activate the webserver (by default the device is in IEC61850 mode), we hold down the side button until the device restarts.

At this point the PWR LED starts to flash to indicate the operating mode as a webserver for the configuration.  
The default address of the webserver is:

<http://192.168.90.101>

user: admin

password: admin

First, let's configure the Ethernet and serial parameters:

Z-KEY-I Setup Firmware Version : 2014\_101

Nessun file selezionato

	CURRENT	UPDATED
STATIC IP	192.168.90.101	192.168.90.101
STATIC IP MASK	255.255.255.0	255.255.255.0
STATIC GATEWAY	192.168.90.1	192.168.90.1
TCP/IP PORT	602	502
TCP/IP TIMEOUT [ms]	612	512
PORT#1 MODBUS PROTOCOL	RTU	RTU
PORT#2 MODBUS PROTOCOL	RTU	RTU
PORT#1 BAUDRATE	38400	38400
PORT#1 DATA BITS	8	8
PORT#1 PARITY	None	None
PORT#1 STOP BITS	1	1
PORT#1 TIMEOUT [ms]	600	500
PORT#1 WRITING RETRIES	3	3
PORT#2 BAUDRATE	38400	38400
PORT#2 DATA BITS	8	8
PORT#2 PARITY	None	None
PORT#2 STOP BITS	1	1
PORT#2 TIMEOUT [ms]	600	500
PORT#2 WRITING RETRIES	3	3
WEB SERVER PORT	80	80
WEB SERVER AUTHENTICATION USER NAME	admin	admin
WEB SERVER AUTHENTICATION USER PASSWORD	admin	admin
IP CHANGE FROM DISCOVERY	Enabled	Enabled
TLS	Disabled	Disabled
MODBUS TCP-IP CLIENT	DISABLED	DISABLED
STOP MODBUS READING WHEN NO IEC61850 CONNECTION	Disabled	Disabled
SYNC CLOCK WITH TIME INTERNET	DISABLED	DISABLED

Now let's create the Modbus master requests (commands).

Let's enter the Setup Modbus Command page:

Z-KEY-I Setup Commands/Tags Firmware Version : 2014\_101

Nessun file selezionato

Page : 1/10

MODBUS COMMAND INDEX	MNEMONIC NAME	TARGET MODBUS DEVICE	TARGET RESOURCE	TARGET MODBUS COMMAND	TARGET MODBUS STATION ADDRESS	TARGET MODBUS START REGISTER	TARGET MODBUS DATA LENGTH	TARGET CONNECTED TO
----------------------	---------------	----------------------	-----------------	-----------------------	-------------------------------	------------------------------	---------------------------	---------------------

Let's read 2 holding registers 40001 and 40002 (offset 0 and 1) from the device with station address 1, press the "ADD" button:

Z-KEY-I Setup Command 1 Firmware Version : 2014\_101

CURRENT	UPDATED
MNEMONIC NAME	<input type="text" value="TAG1"/>
TARGET MODBUS DEVICE	<input type="text" value="CUSTOM"/>
TARGET RESOURCE	<input type="text" value=""/>
TARGET CONNECTED TO	<input type="text" value="PORT#1"/>
TARGET MODBUS STATION ADDRESS	<input type="text" value="1"/>
TARGET MODBUS START REGISTER ADDRESS	<input type="text" value="1"/> <small>Equivalent to the address in the Seneca documentation : 40001</small>
TARGET MODBUS REQUEST TYPE	<input type="text" value="READ HOLDING REGISTER"/>
TARGET REGISTER DATA LENGTH	<input type="text" value="2"/>
TARGET MODBUS PERIODIC TRIGGER (ms)	<input type="text" value="1000"/>
ENDIAN SWAP	<input type="text" value="NONE"/>

Confirm with "APPLY">

Now the command will appear in the command list:

Z-KEY-I Setup Commands/Tags Firmware Version : 2014\_101

Nessun file selezionato

Page : 1/10

MODBUS COMMAND INDEX	MNEMONIC NAME	TARGET MODBUS DEVICE	TARGET RESOURCE	TARGET MODBUS COMMAND	TARGET MODBUS STATION ADDRESS	TARGET MODBUS START REGISTER	TARGET MODBUS DATA LENGTH	TARGET CONNECTED TO
1	TAG1	CUSTOM		READ HOLDING REGISTER	1	40001	2	PORT#1

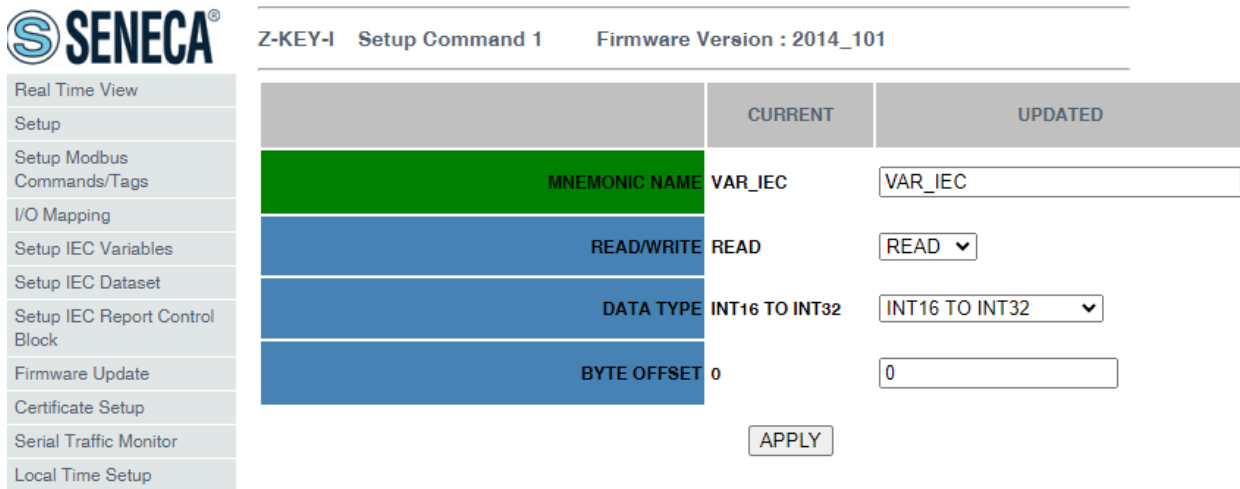
Now the read bytes are updated in the internal memory of the gateway, let's go to the I/O Mapping page:

Z-KEY-I Status Firmware Version : 2014\_101

DATA FLOW DIRECTION

COMMAND MNEMONIC	INTERNAL ADDRESS	QUANTITY
TAG1	<input type="text" value="0"/>	4

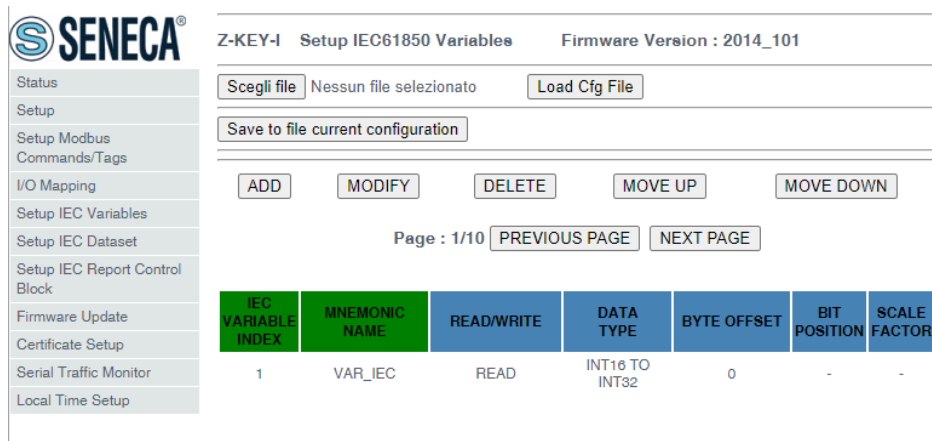
At this point we define an IEC variable associated with the 2 bytes acquired from Modbus:



**Z-KEY-I Setup Command 1 Firmware Version : 2014\_101**

	CURRENT	UPDATED
<b>MNEMONIC NAME</b> VAR_IEC		VAR_IEC
<b>READ/WRITE</b> READ		READ
<b>DATA TYPE</b> INT16 TO INT32		INT16 TO INT32
<b>BYTE OFFSET</b> 0		0

We confirm with APPLY:



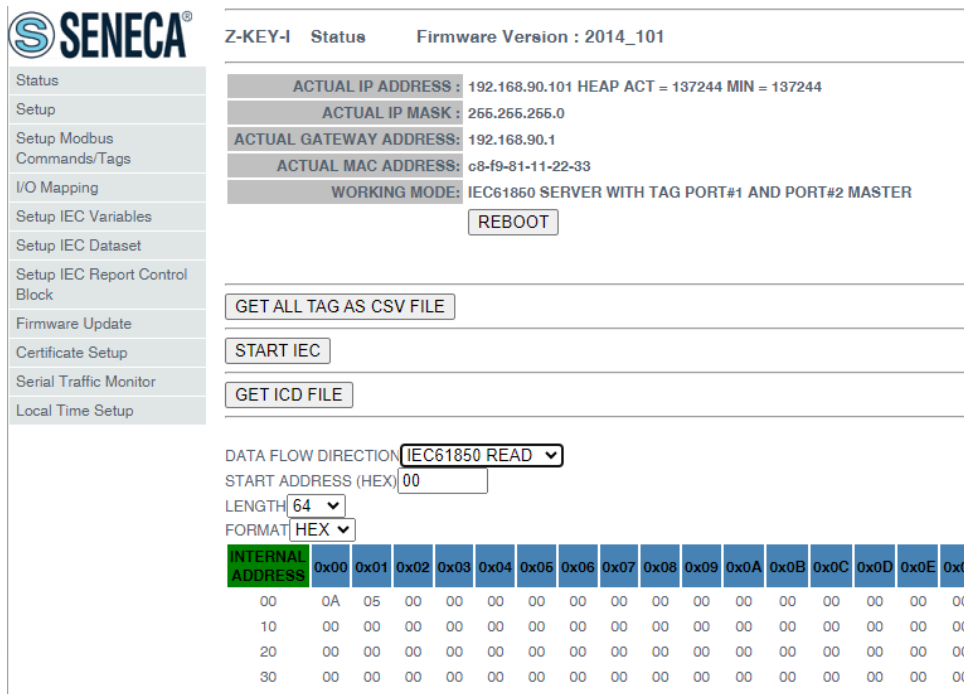
**Z-KEY-I Setup IEC61850 Variables Firmware Version : 2014\_101**

Nessun file selezionato

Page : 1/10

IEC VARIABLE INDEX	MNEMONIC NAME	READ/WRITE	DATA TYPE	BYTE OFFSET	BIT POSITION	SCALE FACTOR
1	VAR_IEC	READ	INT16 TO INT32	0	-	-

If we go to the “Status” section we will find the first 2 bytes in memory with the value read from Modbus (0x0A, 0x05):



**Z-KEY-I Status Firmware Version : 2014\_101**

ACTUAL IP ADDRESS : 192.168.90.101 HEAP ACT = 137244 MIN = 137244  
 ACTUAL IP MASK : 255.255.255.0  
 ACTUAL GATEWAY ADDRESS: 192.168.90.1  
 ACTUAL MAC ADDRESS: c8-f9-81-11-22-33  
 WORKING MODE: IEC61850 SERVER WITH TAG PORT#1 AND PORT#2 MASTER

REBOOT

GET ALL TAG AS CSV FILE

START IEC

GET ICD FILE

DATA FLOW DIRECTION: IEC61850 READ

START ADDRESS (HEX): 00

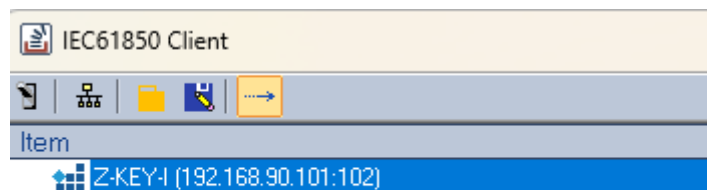
LENGTH: 64

FORMAT: HEX

INTERNAL ADDRESS	0x00	0x01	0x02	0x03	0x04	0x05	0x06	0x07	0x08	0x09	0x0A	0x0B	0x0C	0x0D	0x0E	0x0F
00	0A	05	00	00	00	00	00	00	00	00	00	00	00	00	00	00
10	00	00	00	00	00	00	00	00	00	00	00	00	00	00	00	00
20	00	00	00	00	00	00	00	00	00	00	00	00	00	00	00	00
30	00	00	00	00	00	00	00	00	00	00	00	00	00	00	00	00

Now we press the “Start IEC” button, at this point the device restarts in IEC61850 mode (the webserver is now disabled), the operation could also be obtained by holding down the side button.

Now in the IEC61850 client we activate the connection:

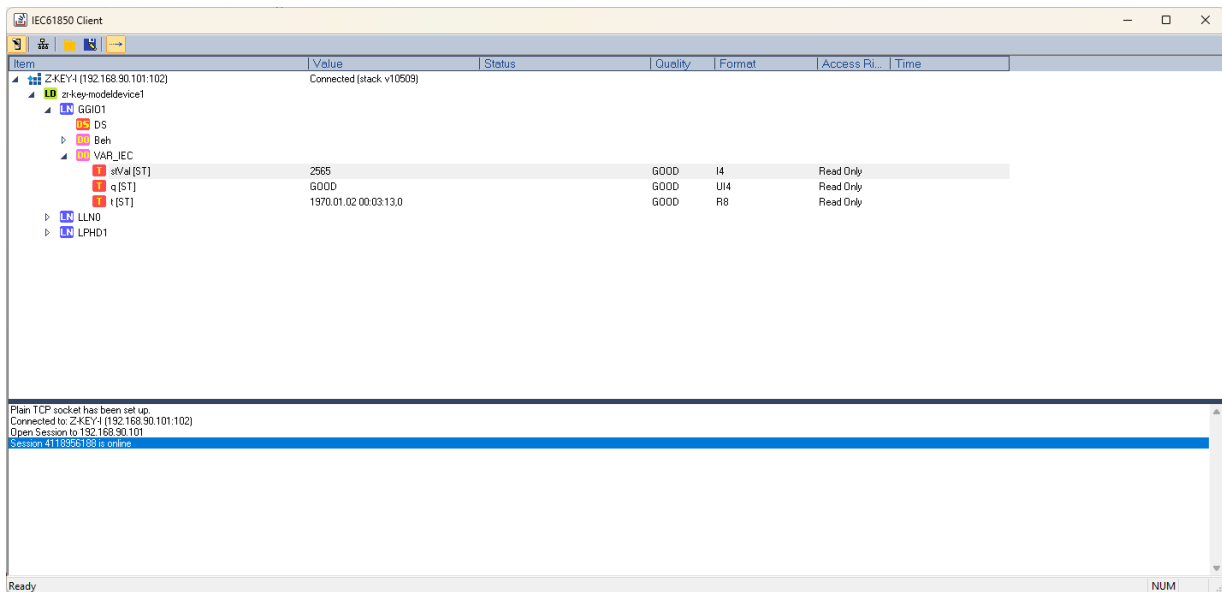


IEC61850 Client

Item

Z-KEY-I (192.168.90.101:102)

And we can view the value coming from Modbus:



## 10. GATEWAY WEBSERVERS

### 10.1. WEBSERVER DEI GATEWAY “-I”

#### 10.1.1. WEBSERVER MODE AND IEC61850 MODE

The device is normally in Webserver mode.

To access the internal webserver, you must put the device in Webserver mode by pressing the button following the procedure:

#### 10.1.2. MANUAL PROCEDURE FOR SWITCHING FROM IEC61850 MODE TO WEBSERVER MODE AND VICE VERSA

To force webserver mode:

- 1) Turn on the device
- 2) Keep the PS1 button pressed until all LEDs turn off
- 3) Release the button
- 4) The device restarts and the “PWR” led flash slowly to indicate webserver mode

To force IEC 61850 mode:

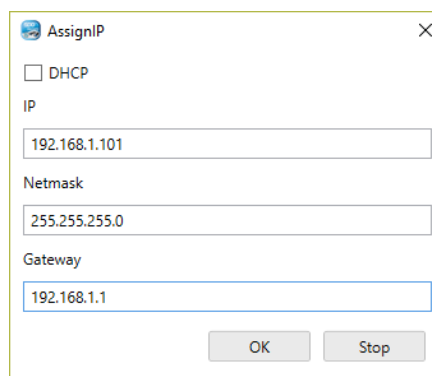
- 1) Turn on the device
  - 2) Keep the PS1 button pressed until all LEDs turn off
  - 3) Release the button
- The device restarts and the “PWR” led flash slowly to indicate IEC 61850 mode

### 10.1.3. STEP BY STEP GUIDE FOR THE FIRST ACCESS TO THE WEBSERVER

#### **STEP 1: POWER THE DEVICE AND CONNECT THE ETHERNET PORT, PUT THE DEVICE IN WEBSERVER MODE**

#### **SENECA DISCOVERY DEVICE SOFTWARE STEP 2**

If you need to change the IP address of the device (default 192.168.90.101), launch the Seneca Discovery Device software and perform the SCAN, select the device and press the “Assign IP” button, set a configuration compatible with your PC, for example:



Confirm with OK. Now the device can be reached via Ethernet from your PC.

#### **STEP 3 ACCESS TO THE CONFIGURATION WEBSERVER**

ENTER your access credentials:

user: admin

password: admin



#### **ATTENTION!**

**THE WEB BROWSERS WHICH HAVE BEEN TESTED FOR COMPATIBILITY WITH THE DEVICE  
WEBSERVER ARE:**

**MOZILLA FIREFOX AND GOOGLE CHROME.**

**THEREFORE, THE OPERATION WITH OTHER BROWSERS IS NOT GUARANTEED**



#### 10.1.4. WEBSERVER DEVICE CONFIGURATION

For further information on the access to the webservice of a new device, please refer to chapter 10.1.3.

 **ATTENTION!**

**THE WEB BROWSERS WHICH HAVE BEEN TESTED FOR COMPATIBILITY WITH THE DEVICE  
WEBSERVER ARE:**

**MOZILLA FIREFOX AND GOOGLE CHROME.**

**THEREFORE, THE OPERATION WITH OTHER BROWSERS IS NOT GUARANTEED**

 **ATTENTION!**

**AFTER THE FIRST ACCESS CHANGE USER NAME AND PASSWORD IN ORDER TO PREVENT  
ACCESS TO THE DEVICE TO UNAUTHORIZED PEOPLE.**

 **ATTENTION!**

**IF THE PARAMETERS TO ACCESS THE WEBSERVER HAVE BEEN LOST, TO ACCESS IT, IT IS  
NECESSARY TO GO THROUGH THE PROCEDURE TO RESET THE FACTORY-SET CONFIGURATION**

#### 10.1.4.1. WEBSERVER SECTIONS

The Webserver is divided into pages (sections) representing the various gateway functions:

##### **Status**

It is the section that displays the values of Modbus requests in real time.

##### **Setup**

This is the section that allows the basic configuration of the device, it also allows you to export or import a configuration.

##### **Setup Modbus Commands / Tags**

It is the section that allows you to add/modify the Modbus commands of the Modbus devices connected to the gateway.

##### **I/O Mapping**

This is the section that allows you to remap the bytes relating to the data coming from the Modbus protocol.

##### **Setup IEC Variables**

This is the section that allows you to create IEC variables starting from the acquisitions of Modbus commands.

##### **Setup IEC Dataset**

This is the section that allows you to create datasets to be used in Report Control Blocks.

##### **Setup IEC Report Control Block**

This is the section that allows you to create Report Control Blocks.

##### **Firmware Update**

This is the section that allows you to update the device firmware.

##### **Certificate Setup**

This is the section that allows you to manage X509 certificates

##### **Serial Traffic Monitor**

It allows to analyse the ModBUS frames of the serials.

##### **Local Time Setup**

This allows you to set the device date/time

10.1.4.2. “STATUS” SECTION

The Status section displays the status of the values acquired from modbus in the memory:

DATA FLOW DIRECTION  ▾  
 START ADDRESS (HEX)   
 LENGTH  ▾  
 FORMAT  ▾

INTERNAL ADDRESS	0x00	0x01	0x02	0x03	0x04	0x05	0x06	0x07	0x08	0x09	0x0A	0x0B	0x0C	0x0D	0x0E	0x0F
00	00	00	00	00	00	00	00	00	00	00	00	00	00	00	00	00
10	00	00	00	00	00	00	00	00	00	00	00	00	00	00	00	00
20	00	00	00	00	00	00	00	00	00	00	00	00	00	00	00	00
30	00	00	00	00	00	00	00	00	00	00	00	00	00	00	00	00
40	00	00	00	00	00	00	00	00	00	00	00	00	00	00	00	00
50	00	00	00	00	00	00	00	00	00	00	00	00	00	00	00	00
60	00	00	00	00	00	00	00	00	00	00	00	00	00	00	00	00
70	00	00	00	00	00	00	00	00	00	00	00	00	00	00	00	00
80	00	00	00	00	00	00	00	00	00	00	00	00	00	00	00	00
90	00	00	00	00	00	00	00	00	00	00	00	00	00	00	00	00
A0	00	00	00	00	00	00	00	00	00	00	00	00	00	00	00	00
B0	00	00	00	00	00	00	00	00	00	00	00	00	00	00	00	00
C0	00	00	00	00	00	00	00	00	00	00	00	00	00	00	00	00
D0	00	00	00	00	00	00	00	00	00	00	00	00	00	00	00	00
E0	00	00	00	00	00	00	00	00	00	00	00	00	00	00	00	00
F0	00	00	00	00	00	00	00	00	00	00	00	00	00	00	00	00

There are two types of memories: that of the read-only variables and that of the write-only variables.

GET ICD FILE allows you to export the configuration to be imported into an IEC61850 client that supports the ICD format.

**10.1.4.3. “SETUP” SECTION*****DHCP (ETH) (default: Disabled)***

Sets the DHCP client to get an IP address automatically.

***STATIC IP (default: 192.168.90.101)***

Sets the device static address. Careful not to enter devices with the same IP address into the same network.

***STATIC IP MASK (default: 255.255.255.0)***

Sets the mask for the IP network.

***STATIC GATEWAY (default: 192.168.90.1)***

Sets the gateway address.

***TCP-IP PORT (default: 502)***

Sets the communication port for the Modbus TCP-IP client protocol.

***TCP-IP TIMEOUT [ms] (default 512 ms)***

Sets the waiting time for a request to be considered in timeout.

***PORT #1 MODBUS PROTOCOL (default RTU)***

Sets the protocol on the serial between Modbus RTU or Modbus ASCII

***PORT #2 MODBUS PROTOCOL (default RTU)***

Sets the protocol on the serial between Modbus RTU or Modbus ASCII

***PORT #1 BAUDRATE (default: 38400 baud)***

Selects the communication speed of the COM #1 serial port

***PORT #1 DATA BITS (default: 38400 baud)***

Selects the communication speed of the COM #1 serial port

***PORT #1 PARITY (default: None)***

Sets the parity for the COM #1 serial communication port.

***PORT #1 STOP BIT (default: 1)***

Sets the number of stop bits for the COM #1 serial communication port.

***PORT #1 TIMEOUT [ms]***

Sets the wait time before defining fail.

***PORT #1 WRITING RETRIES (default: 3)***

Selects the number of writing attempts to be made on a serial slave before returning an error.

***PORT #1 MAX READ NUM***

Sets the maximum number of simultaneous serial reading ModBUS registers, the firmware will use this value to optimize the ModBUS readings.

***PORT #1 MAX WRITE NUM***

Sets the maximum number of simultaneous writing ModBUS registers of the serial, the firmware will use this value to optimize the ModBUS writings.

***PORT #2 BAUDRATE (default: 38400 baud) (only for Z-KEY-I and Z-KEY-2ETH-I)***

Selects the communication speed of the COM #2 serial port

***PORT #2 DATA BITS (default: 38400 baud) (only for Z-KEY-I and Z-KEY-2ETH-I)***

Selects the communication speed of the COM #2 serial port

***PORT #2 PARITY (default: None) (only for Z-KEY-I and Z-KEY-2ETH-I)***

Sets the parity for the COM #2 serial communication port.

***PORT #2 STOP BIT (default: 1) (only for Z-KEY-I and Z-KEY-2ETH-I)***

Sets the number of stop bits for the COM #2 serial communication port.

***PORT# 2 TIMEOUT [ms] (only for Z-KEY-I and Z-KEY-2ETH-I)***

Sets the wait time before defining fail.

***PORT #2 WRITING RETRIES (default: 3) (only for Z-KEY-I and Z-KEY-2ETH-I)***

Selects the number of writing attempts to be made on a serial slave before returning an error.

***PORT #2 MAX READ NUM (only for Z-KEY-I and Z-KEY-2ETH-I)***

Sets the maximum number of simultaneous reading ModBUS registers of the remote TCP-IP Modbus server, the firmware will use this value to optimize the ModBUS readings.

***PORT #2 MAX WRITE NUM (only for Z-KEY-I and Z-KEY-2ETH-I)***

Sets the maximum number of simultaneous writing ModBUS registers of the serial, the firmware will use this value to optimize the ModBUS writings.

***WEB SERVER AUTHENTICATION USER NAME (default: admin)***

Sets the username to access the webserver.

***WEB SERVER PASSWORD (default: admin)***

Sets the password to access the webserver and to read/write the configuration (if enabled).

**WEB SERVER PORT (default: 80)**

Sets the communication port for the web server.

**IP CHANGE FROM DISCOVERY (default: Enabled)**

Selects whether or not the device accepts the IP address change from the Seneca Discovery Device software.

**TLS (default: Disabled)**

Enables or disables cryptographic protocols via TLS.

**MODBUS TCP-IP CLIENT**

Enables or not the TCP-IP client Modbus

**MODBUS TCP-IP SERVER#1...3 PORT**

Sets the port for the max 3 remote TCP-IP Modbus servers

**MODBUS TCP-IP SERVER#1...3 ADDRESS**

Sets the IP address for the max 3 remote TCP-IP Modbus servers

**MODBUS TCP-IP CLIENT TIMEOUT [ms]**

Sets the timeout for remote TCP-IP Modbus servers

**MODBUS TCP-IP CLIENT WRITING ATTEMPTS**

Selects the number of writing attempts to be made on a remote TCP-IP Modbus server before returning an error and activating the quarantine.

**MODBUS TCP-IP CLIENT MAX READ NUM**

Sets the maximum number of simultaneous reading ModBUS registers of the remote TCP-IP Modbus server, the firmware will use this value to optimize the ModBUS readings.

**MODBUS TCP-IP CLIENT MAX WRITE NUM**

Sets the maximum number of simultaneous writing ModBUS registers of the remote TCP-IP Modbus server, the firmware will use this value to optimize the ModBUS writings.

**SERVER AFTER FAIL DELAY**

Sets the number of quarantine seconds after a tag has been declared in fail (i.e. these tags are no longer considered) before being interrogated again.

**STOP MODBUS READING WHEN NO IEC61850 CONNECTION**

If active, it allows to stop the modbus communication when the communication with the IEC61850 client is lost. This allows to trigger any timeouts present in the modbus slave/server devices.

**SYNC CLOCK WITH TIME INTERNET**

Allows you to enable date/time updating via connection to NTP servers (RFC 5905).

 **ATTENTION!**

**AT EACH RESTART THE DEVICE MUST BE ABLE TO RETRIEVE THE DATE/TIME FROM AN NTP  
SERVER OTHERWISE THIS WILL BE SET TO 1/1/1970 0:00**

***NTP SERVER 1 ADDRESS***

This is the IP address of the first NTP server (for example 193.204.114.232 for INRIM's NTP)

***NTP SERVER 2 ADDRESS***

This is the IP address of the second NTP server (in case the first one does not respond)

***GMT***

Sets the offset from Greenwich Mean Time (for example for Italy GMT=+1 when daylight saving time is not in effect)

***IEC MODEL NAME***

Sets the model name for the IEC protocol

***IEC DEVICE NAME***

Sets the device name for the IEC protocol

***IEC61850 SERVER TCP/IP PORT***

Sets the TCP-IP communication port of the IEC61850 protocol

In addition, a configuration can be exported / imported via the webserver.

### 10.1.4.3.1. SAVING A CONFIGURATION ON A FILE

A configuration that includes:

CONFIGURATION  
TAGS/COMMANDS

It can be saved to a file this way:

Go to the Setup section and select the file to save, press the "Save config" button

Scegli file	Nessun file selezionato	Load conf file
Save conf file		



### 10.1.4.3.2. IMPORTING A CONFIGURATION FROM A FILE

A configuration that includes:

CONFIGURATION  
TAGS/COMMANDS

It can be imported from a file this way:

Go to the Setup section and select the file to load, press the "Load config" button

Scegli file	Nessun file selezionato	Load conf file
Save conf file		

### 10.1.4.4. "SETUP COMMANDS/TAGS" SECTION

In this section you can add, edit or delete a Modbus command.

Using the ADD button you can add a new command.

Using the MODIFY button it is possible to modify an existing command.

Using the DEL button it is possible to delete an existing command.

#### ***MNEMONIC NAME***

It is the identifying name of the command

#### ***TARGET MODBUS DEVICE***

It represents the Seneca Modbus device selected from those available in the database.

In the case of a non-Seneca device or for advanced configurations, select CUSTOM.

#### ***TARGET RESOURCE***

It represents the Seneca device variable you want to add.

#### ***TARGET CONNECTED TO***

It selects the serial to be used for Modbus serial communication for the specified TAG.

#### ***TARGET MODBUS STATION ADDRESS***

It selects the station address to use for the command.

#### ***TARGET MODBUS START REGISTER***

It represents the starting Modbus address of the command (in the case of a Seneca device it is filled in automatically).

**TARGET MODBUS REQUEST TYPE**

It represents the type of Modbus command to use (Read Holding Register, Coil etc.).  
In the case of a Seneca device it is filled in automatically.

**TARGET REGISTER DATA LENGTH**

Allows you to set how many Modbus registers are required in the command.

**TARGET MODBUS WRITE PERIODIC TRIGGER [ms]**

Represents the time interval of execution of the command

**ENDIAN SWAP**

Allows you to swap a register read by Modbus, i.e.:

NONE: no swap

BYTE: shifts the high byte with low byte (for example Modbus reading 0xAABB will be converted to 0xBBAA)

WORD: In the case of a data type greater than a Modbus register (e.g. single precision Floating Point registers) it allows you to set which word (register) to use as the most significant part, for example:

Register 1 = 0xAABB

Register 2 = 0xCCDD

will become a single value 0xAABBCCDD if the parameter is NONE, otherwise 0xCCDDAABB if this parameter is active

BYTE AND WORD: as in the previous case but there will also be a byte swap, for example:

Register 1 = 0xAABB

Register 2 = 0xCCDD

Will become 0xDDCCBBAA

**10.1.4.5. “I/O MAPPING” SECTION**

Allows you to move the contents of the bytes of the read and write buffers.

**10.1.4.1. “SETUP IEC VARIABLES” SECTION**

Allows you to define an IEC variable from the read or write buffer

**MNEMONIC NAME**

This is the name of the variable that will appear in the IEC61850 client

**READ/WRITE**

Selects whether the variable should be created from the read or write buffer

**DATA TYPE**

Represents the data type of the variable, the device can also convert the data type on the IEC61850 protocol:

BIT -> 1 bit buffer size

INT16 TO INT32 -> 2 byte buffer size (converted to 4 bytes in the IEC61850 protocol)  
UINT16 TO INT32 -> 2 byte buffer size (converted to 4 bytes in the IEC61850 protocol)  
INT32 -> 4 byte buffer size  
INT16 TO FLOAT32 -> 2 byte buffer size (converted to 4 bytes in the IEC61850 protocol)  
UINT16 TO FLOAT32 -> 2 byte buffer size (converted to 4 bytes in the IEC61850 protocol)  
INT32 TO FLOAT32 -> 4 byte buffer size  
FLOAT 32 -> 4 byte buffer size

**BYTE OFFSET**

Represents the starting byte of the read or write buffer variable. The amount of bytes to use is defined by the data type

**SCALE FACTOR**

It is the floating point coefficient that multiplies the Modbus value (for example, if you set 0.1, the Modbus reading of 10 will be converted to 1 on IEC61850).

**10.1.4.1. "SETUP IEC DATASET" SECTION**

Allows you to set datasets by selecting the variables to enter.

**10.1.4.2. "SETUP IEC REPORT CONTROL BLOCK" SECTION**

Allows you to set the configuration of the Report Control Blocks.

**10.1.4.1. "FIRMWARE UPDATE" SECTION**

In order to improve, add, optimize the functions of the product, Seneca releases firmware updates on the device section on the [www.seneca.it](http://www.seneca.it) website

**ATTENTION!**

**NOT TO DAMAGE THE DEVICE DO NOT REMOVE THE POWER SUPPLY DURING THE FIRMWARE UPDATE OPERATION.**

**10.1.4.1. "CERTIFICATE SETUP" SECTION**

This section allows you to send or delete a certificate and/or the private key of the device.  
Up to 5 certificates are supported for clients.  
The used format is PEM.

**10.1.4.2. SERIAL "SERIAL TRAFFIC MONITOR"**

Allows you to view the serial packets that are in transit.

### 10.1.4.1. LOCAL TIME SETUP

This allows you to set the date/time manually.

 **ATTENTION!**

**IF AN NTP SERVER IS NOT SET, THE DEVICE WILL HAVE THE DATE/TIME 1/1/1970 0:00 WHEN IT RESTARTS**

## 11. SUPPORTED MODBUS COMMUNICATION PROTOCOLS

The Modbus communication protocols supported are:

- Modbus RTU/ASCII master (from #1 and #2 serial ports)
- Modbus RTU/ASCII slave (from #1 and #2 serial ports)
- Modbus TCP-IP Client (from the Ethernet port) up to 3 remote TCP-IP Modbus Servers

For more information on these protocols, see the website:

<http://www.modbus.org/specs.php>.

### 11.1. SUPPORTED MODBUS FUNCTION CODES

The following Modbus functions are supported:

- Read Coils (function 1)
- Read Discrete Inputs (function 2)
- Read Holding Registers (function 3)
- Read Input Registers (function 4)
- Write Single Coil (function 5)
- Write Single Register (function 6)
- Write multiple Coils (function 15)
- Write Multiple Registers (function 16)

 **ATTENTION!**

**All 32-bit variables are contained in 2 consecutive Modbus registers**  
**All 64-bit variables are contained in 4 consecutive Modbus registers**

## 12. **RESETTING THE DEVICE TO ITS FACTORY CONFIGURATION**

The factory configuration resets all parameters to default.

To reset the device to the factory configuration it is necessary to follow the procedure below:

Z-KEY-I / Z-KEY-2ETH-I:

- 1) Remove power from the device
- 2) Turn dip switches 1 and 2 to ON
- 3) Power up the device and wait at least 10 seconds
- 4) Remove power from the device
- 5) Turn dip switches 1 and 2 to OFF
- 6) At the next restart the device will have loaded the factory configuration

R-KEY-LT-I:

- 1) Remove power from the device
- 2) Set dip switches 1 and 2 of SW2 to ON
- 3) Power up the device and wait at least 10 seconds
- 4) Remove power from the device
- 5) Turn 2 SW2 dip switches to OFF.
- 6) At the next restart the device will have loaded the factory configuration

### 13. INFORMATION ABOUT MODBUS REGISTERS

The following abbreviations are used in the following chapter:

MS	Most Significant
LS	Least Significant
MSBIT	Most Significant Bit
LSBIT	Least Significant Bit
MMSW	“Most” Most Significant Word (16bit)
MSW	Most Significant Word (16bit)
LSW	Least Significant Word (16bit)
LLSW	“Least” Least Significant Word (16bit)
RO	Read Only
RW*	Read-Write: REGISTERS CONTAINED IN FLASH MEMORY: WRITABLE ABOUT 10,000 TIMES MAXIMUM
RW**	Read-Write: REGISTERS THAT CAN BE WRITTEN ONLY AFTER WRITING THE COMMAND "ENABLE WRITE CUSTOM ENERGIES = 49616"
UNSIGNED 16 BIT	Unsigned integer register that can assume values from 0 to 65535
SIGNED 16 BIT	Signed integer register that can take values from -32768 to +32767
UNSIGNED 32 BIT	Unsigned integer register that can assume values from 0 to 4294967296
SIGNED 32 BIT	Signed integer register that can take values from -2147483648 to 2147483647
UNSIGNED 64 BIT	Unsigned integer register that can assume values from 0 to 18446744073709551615
SIGNED 64 BIT	Signed integer register that can assume values from $-2^{63}$ to $2^{63}-1$
FLOAT 32 BIT	32-bit, single-precision floating-point register (IEEE 754) <a href="https://en.wikipedia.org/wiki/IEEE_754">https://en.wikipedia.org/wiki/IEEE_754</a>
BIT	Boolean register, which can take the values 0 (false) or 1 (true)

#### 13.1. NUMBERING OF "0-BASED" OR "1-BASED" MODBUS ADDRESSES

According to the Modbus standard the Holding Registers are addressable from 0 to 65535, there are 2 different conventions for numbering the addresses: "0-BASED" and "1-BASED".

For greater clarity, Seneca shows its register tables in both conventions.

**⚠ ATTENTION!**

***carefully read the documentation of the Modbus Master DEVICE IN ORDER to understand which of the TWO conventions the manufacturer has decided to use  
SENECA USES THE "1 BASED" CONVENTION FOR ITS PRODUCTS***

### 13.2. NUMBERING OF MODBUS ADDRESSES WITH "0-BASED" CONVENTION

The numbering is:

<b>HOLDING REGISTER MODBUS ADDRESS (OFFSET)</b>	<b>MEANING</b>
0	FIRST REGISTER
1	SECOND REGISTER
2	THIRD REGISTER
3	FOURTH REGISTER
4	FIFTH REGISTER

Therefore, the first register is at address 0.

In the following tables, this convention is indicated with “**ADDRESS OFFSET**”.

### 13.3. NUMBERING OF MODBUS ADDRESSES WITH "1 BASED" CONVENTION (STANDARD)

The numbering is that established by the Modbus consortium and is of the type:

<b>HOLDING REGISTER MODBUS ADDRESS 4x</b>	<b>MEANING</b>
40001	FIRST REGISTER
40002	SECOND REGISTER
40003	THIRD REGISTER
40004	FOURTH REGISTER
40005	FIFTH REGISTER

This convention is indicated with “**ADDRESS 4x**” since a 40000 is added to the address so that the first Modbus register is 40001.

A further convention is also possible where the number 4 is omitted in front of the register address:

<b>HOLDING MODBUS ADDRESS WITHOUT 4x</b>	<b>MEANING</b>
1	FIRST REGISTER
2	SECOND REGISTER
3	THIRD REGISTER
4	FOURTH REGISTER
5	FIFTH REGISTER

### 13.4. BIT CONVENTION WITHIN A MODBUS HOLDING REGISTER

A Modbus Holding Register consists of 16 bits with the following convention:

BIT 15	BIT 14	BIT 13	BIT 12	BIT 11	BIT 10	BIT 9	BIT 8	BIT 7	BIT 6	BIT 5	BIT 4	BIT 3	BIT 2	BIT 1	BIT 0
-----------	-----------	-----------	-----------	-----------	-----------	----------	----------	----------	----------	----------	----------	----------	----------	----------	----------

For instance, if the value of the register in decimal is

12300

the value 12300 in hexadecimal is:

0x300C

the hexadecimal 0x300C in binary value is:

11 0000 0000 1100

So, using the above convention, we get:

BIT 15	BIT 14	BIT 13	BIT 12	BIT 11	BIT 10	BIT 9	BIT 8	BIT 7	BIT 6	BIT 5	BIT 4	BIT 3	BIT 2	BIT 1	BIT 0
0	0	1	1	0	0	0	0	0	0	0	0	1	1	0	0

### 13.5. MSB and LSB BYTE CONVENTION WITHIN A MODBUS HOLDING REGISTER

A Modbus Holding Register consists of 16 bits with the following convention:

BIT 15	BIT 14	BIT 13	BIT 12	BIT 11	BIT 10	BIT 9	BIT 8	BIT 7	BIT 6	BIT 5	BIT 4	BIT 3	BIT 2	BIT 1	BIT 0
-----------	-----------	-----------	-----------	-----------	-----------	----------	----------	----------	----------	----------	----------	----------	----------	----------	----------

LSB Byte (Least Significant Byte) defines the 8 bits ranging from Bit 0 to Bit 7 included, we define MSB Byte (Most Significant Byte) the 8 bits ranging from Bit 8 to Bit 15 inclusive:

BIT 15	BIT 14	BIT 13	BIT 12	BIT 11	BIT 10	BIT 9	BIT 8	BIT 7	BIT 6	BIT 5	BIT 4	BIT 3	BIT 2	BIT 1	BIT 0
BYTE MSB								BYTE LSB							



### 13.6. REPRESENTATION OF A 32-BIT VALUE IN TWO CONSECUTIVE MODBUS HOLDING REGISTERS

The representation of a 32-bit value in the Modbus Holding Registers is made using 2 consecutive Holding Registers (a Holding Register is a 16-bit register). To obtain the 32-bit value it is therefore necessary to read two consecutive registers:

For example, if register 40064 contains the 16 most significant bits (MSW) while register 40065 contains the least significant 16 bits (LSW), the 32-bit value is obtained by composing the 2 registers:

BIT	BIT	BIT	BIT	BIT	BIT	BIT	BIT	BIT	BIT	BIT	BIT	BIT	BIT	BIT	BIT
15	14	13	12	11	10	9	8	7	6	5	4	3	2	1	0
40064 MOST SIGNIFICANT WORD															

BIT	BIT	BIT	BIT	BIT	BIT	BIT	BIT	BIT	BIT	BIT	BIT	BIT	BIT	BIT	BIT
15	14	13	12	11	10	9	8	7	6	5	4	3	2	1	0
40065 LEAST SIGNIFICANT WORD															

$$Value_{32bit} = Register_{LSW} + (Register_{MSW} * 65536)$$

In the reading registers it is possible to swap the most significant word with the least significant word, therefore it is possible to obtain 40064 as LSW and 40065 as MSW.

